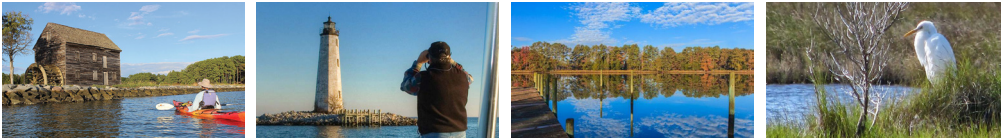




## The Mariner



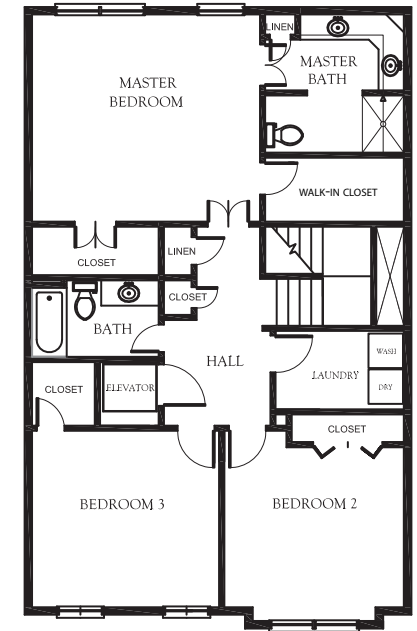
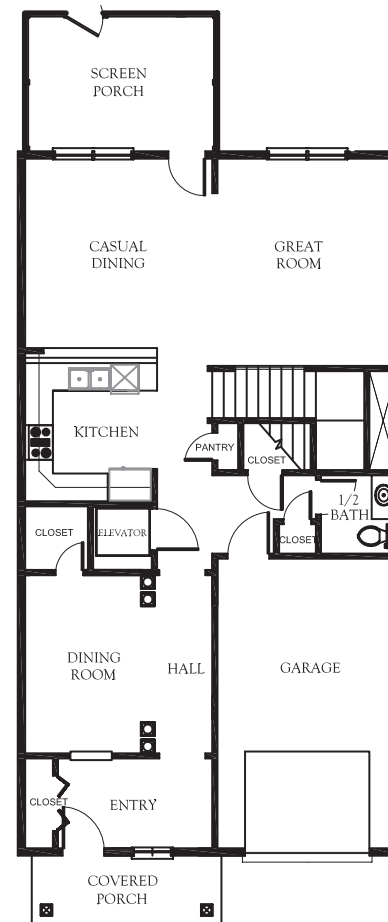
Mathew's Home of Hassle-free Living:  
You will no longer have to worry about...

- Exterior Home Maintenance
- Lawn and Landscaping Care
- Snow and Leaf Removal
- On-Site Septic Systems and Private Wells



Real Estate Investment • Development  
Construction • Sales/Leasing  
Property Management

**Jim Meade**  
(239) 776-2952 [jmeade@whhtrice.com](mailto:jmeade@whhtrice.com)  
[www.westvillelanding.com](http://www.westvillelanding.com)



Two-Story Town Home  
2,378± Square Feet of Living Space  
2,875± Total Area Under Roof (Includes Porches and Garage)

3 Bedrooms | 2½ Bathrooms  
Covered Front Porch, Covered and Screened Rear Porch  
Attached 1-Car Garage

Open Floor Plan  
Accessible Entry, Halls, Bathrooms, Laundry and Kitchen  
In-Floor Heating & Heat Pump Heating/Cooling  
Standby Emergency Power Supply

Optional Cab Elevator (Shaft is Standard)