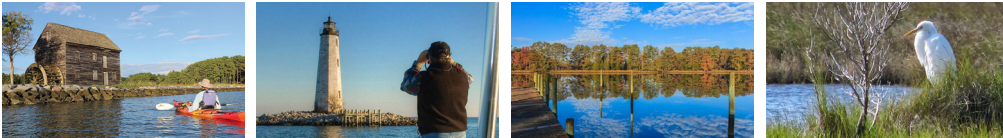
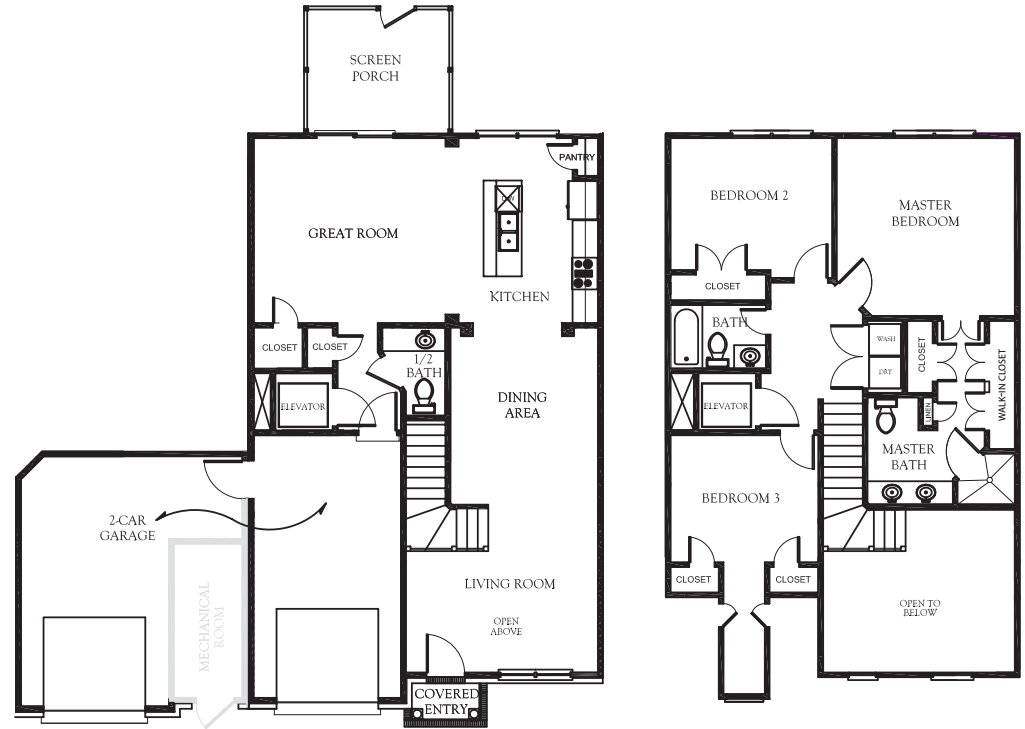




The Mathews Two-Story



**Mathew's Home of Hassle-free Living:
You will no longer have to worry about...**

- Exterior Home Maintenance
- Lawn and Landscaping Care
- Snow and Leaf Removal
- On-Site Septic Systems and Private Wells



Real Estate Investment • Development
Construction • Sales/Leasing
Property Management

Jim Meade
(239) 776-2952 jmeade@whhtrice.com
www.westvillelanding.com

Interior Unit, Two-Story Town Home
1,877± Square Feet of Living Space
2,790± Total Area Under Roof (Includes Porches and Garage)

3 Bedrooms
2½ Bathrooms
Covered Front Entry, Covered and Screened Rear Porch
Attached 2-Car Garage

Open Floor Plan
Accessible Entry, Halls, Bathrooms, Laundry and Kitchen
in-Floor Heating (1st Floor only) & Heat Pump Heating/Cooling
Standby Emergency Power Supply

Optional Cab Elevator (Shaft is Standard)

